

GDO WiFi Connection Manual

You will need:

- A smartphone or tablet
- A strong Wi-Fi signal with 2.4G network in the garage
- Name and password for your home network
- Turn on the bluetooth on your device.

Please notice:

1. Before Wi-Fi connection, the garage door opener opening and closing position must have been set.
2. Only one main account to control the garage door opener is possible and the main account can invite the families to control.
3. Make sure the garage door opener has not been previously connected to another smart phone.

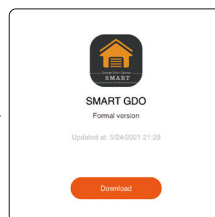
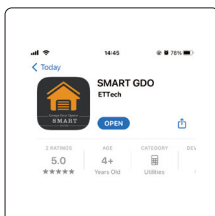
Please do step 7. Restore factory default settings before the below instructions.

Download APP

1. Download APP

Download the “Smart GDO” App to your smart phone via Google play (for android) or App store (for IOS).

Or use your smart phone to scan the below QR code. Tap the right top corner, to open with browser to download the app.



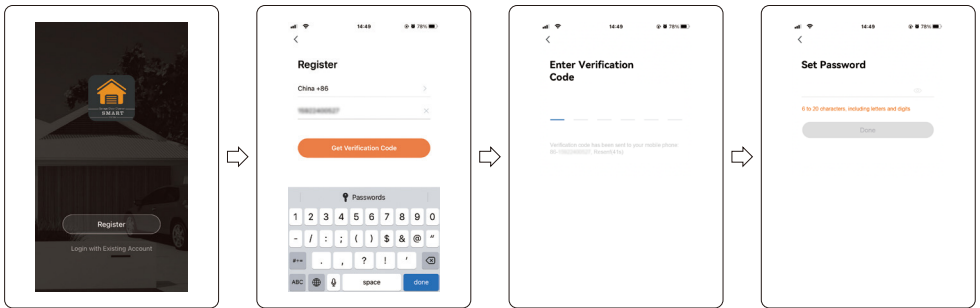
SET APP

2. Create your account

Tap the “Register” button

Enter your mobile number

Tap the “Get verification code” button > Enter your received code from your phone > Set password



3. Add Device

Tap “Add Device” button

choose “Garage”

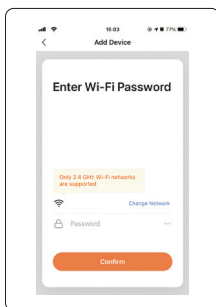
Tap “Confirm Indicator rapidly blink” button



4. Enter your home wifi

Enter your home Wifi network name and password. Don't tap "Confirm" now.

Tap "Confirm" after finishing the step5.

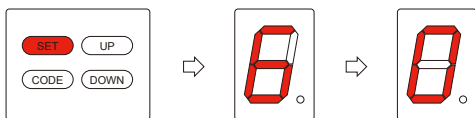


Don't tap "Confirm" and skip to set motor WIFI in step 5.

SET Garage door opener

5. Setting the opener wifi function

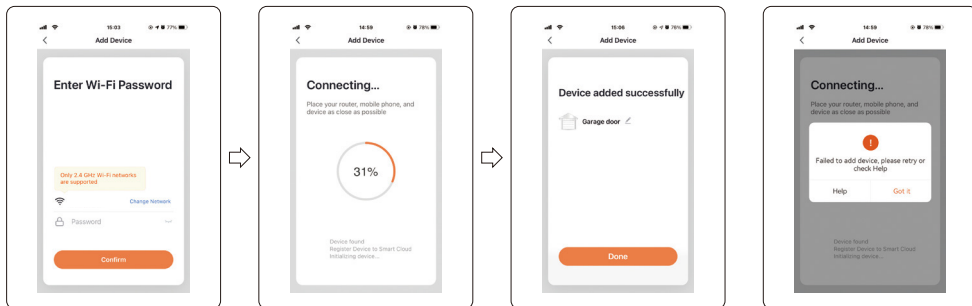
Tap "set" button on the garage door opener and hold until "6" displays on the screen. Then "0" displays on the screen and will keep blinking.



6. Go back to APP to tap "CONFIRM"

Tap "CONFIRM"

At the same time, the opener panel will display 2. 3, 4



If connection fails, firstly restore factory default setting on the opener by following step 7. And follow above steps to retry

"2" means the APP has connect sucessfully to the wifi mode in opener

"3" means the wifi mode has connected to the home network

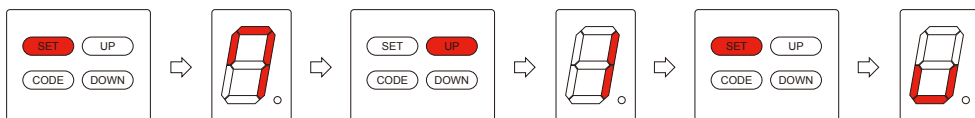
"4" means your APP is ok to control the opener

7. Restore factory default settings

Press "SET"button in the opener and hold until "7" displays on the screen

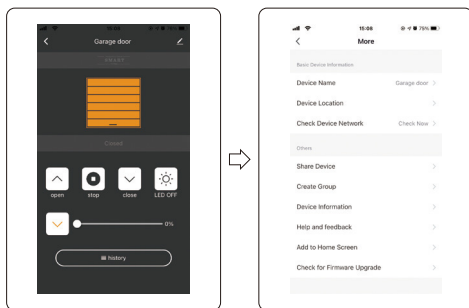
Press"UP"button in the opener, "1" will be displays on the screen

Press"SET"button one time, below pattern will be displayed "U", it means your garage door opener is not connected to any network.



8. Other information

Tap the right top corner edit button to get more functions(Device Name, Device Location, Check Device Network, Share Device, Remove Device and so on)



9. Remove device

Option 1: Tap"Remove Device"to delete the opener information in your original account. Keep the garage door opener powered on when removing the device and WiFi connected, then re-connect the opener step by step.

Option 2: Follow Step 7 to restore the factory settings on garage door opener, then re-connect the opener step by step.